

56
57



with service to
 ELIZABETH Downtown Business District
 LINDEN
 ROSELLE
 CRANFORD Cranford Business Park
 WINFIELD
 and intermediate stops

To Linden/Winfield

Weekdays

LINE NO.	MAP REFERENCE											
	1	2	4	3	5	6	8	9	11	12		
ELIZABETH Broad St. at Jersey St.	520	523	-	527	536	540	546	-	-	-	-	-
ELIZABETH Washington Ave. at Pearl St.	605	608	615	-	623	-	-	627	633	641	-	-
LINDEN US 1 & 9 at Park Ave.	645	648	-	652	703	707	714	-	-	-	-	-
LINDEN Lidgerwood Ave. at Spofford Ave.	735	738	745	-	753	-	-	757	803	811	-	-
LINDEN Wood Ave. at Railroad Station	810	813	-	817	828	832	839	-	-	-	-	-
LINDEN Wood Ave. at 15th St.	905	909	916	-	924	-	-	928	933	940	-	-
LINDEN Linden Plaza (at Supermarket)	935	939	-	943	954	958	1004	-	-	-	-	-
LINDEN - St. Georges Ave. Wood Ave. at Gesner St.	1035	1039	1046	-	1054	-	-	1058	-	1110	-	-
CRANFORD Commerce Dr. at Myrtle St.	1100	1104	-	1108	1119	1123	1129	-	-	-	-	-
WINFIELD Wavcrest Ave. at Seafoam Ave.	1205	1209	1216	-	1224	-	-	1228	-	1240	-	-
	1225	1229	-	1233	1244	1248	1254	-	-	-	-	-
	135	139	146	-	154	-	-	158	-	210	-	-
	150	154	-	158	209	213	219	-	-	-	-	-
	305	310	319	-	330	-	-	334	-	347	-	-
	315	320	-	324	337	341	347	-	-	-	-	-
	440	445	-	449	502	506	512	-	-	-	-	-
	445	450	459	-	510	-	-	514	-	527	-	-
	605	609	-	613	622	625	631	-	-	-	-	-
	620	623	630	-	637	-	-	640	-	654	-	-
	730	734	-	738	747	750	756	-	-	-	-	-
	750	753	800	-	807	-	-	810	-	824	-	-
	855	859	-	903	912	915	921	-	-	-	-	-
	920	923	928	-	934	-	-	937	-	947	-	-
	1020	1023	-	1026	1034	1037	1043	-	-	-	-	-

Saturdays

LINE NO.	MAP REFERENCE											
	1	2	4	3	5	6	8	9	12			
ELIZABETH Broad St. at Jersey St.	615	618	-	622	630	633	639	-	-	-	-	-
ELIZABETH Washington Ave. at Pearl St.	655	658	703	-	708	-	-	711	722	-	-	-
LINDEN US 1 & 9 at Park Ave.	720	723	-	727	735	738	744	-	-	-	-	-
LINDEN Lidgerwood Ave. at Spofford Ave.	815	818	823	-	828	-	-	831	842	-	-	-
LINDEN Wood Ave. at Railroad Station	825	828	-	832	840	843	849	-	-	-	-	-
LINDEN Wood Ave. at 15th St.	935	939	-	943	953	956	1002	-	-	-	-	-
LINDEN Linden Plaza (at Supermarket)	935	938	947	-	953	-	-	957	1009	-	-	-
LINDEN - St. Georges Ave. Wood Ave. at Gesner St.	1045	1049	-	1053	1103	1106	1112	-	-	-	-	-
WINFIELD Wavcrest Ave. at Seafoam Ave.	1100	1103	1112	-	1118	-	-	1122	1134	-	-	-
	1155	1159	-	1203	1213	1216	1222	-	-	-	-	-
	1225	1228	1237	-	1243	-	-	1247	1259	-	-	-
	105	109	-	113	123	126	132	-	-	-	-	-
	135	138	147	-	153	-	-	157	209	-	-	-
	155	159	-	203	213	216	222	-	-	-	-	-
	300	303	311	-	317	-	-	320	332	-	-	-
	310	314	-	318	328	332	337	-	-	-	-	-
	425	429	-	433	443	447	452	-	-	-	-	-
	425	428	436	-	442	-	-	445	457	-	-	-
	540	544	-	548	558	602	607	-	-	-	-	-
	545	548	556	-	602	-	-	605	616	-	-	-
	655	658	-	702	710	713	718	-	-	-	-	-
	705	708	715	-	720	-	-	723	734	-	-	-
	810	813	-	817	825	828	833	-	-	-	-	-
	925	928	-	932	940	943	948	-	-	-	-	-
	1030	1033	-	1037	1045	1048	1053	-	-	-	-	-

C - Trip operates via Cranford Business Park.

NOTE: - All No. 57 trips continue to Aviation Plaza after serving Linden Plaza.

A.M. - Light face type

P.M. - Bold face type



All trips are operated with lift-equipped buses.
 NOTE: when traveling into or out of the Port Authority Bus Terminal, please call 1 (973) 275-5555 in advance for the location of an accessible boarding gate.

LOOKING FOR A CAREER?
 We're looking for:

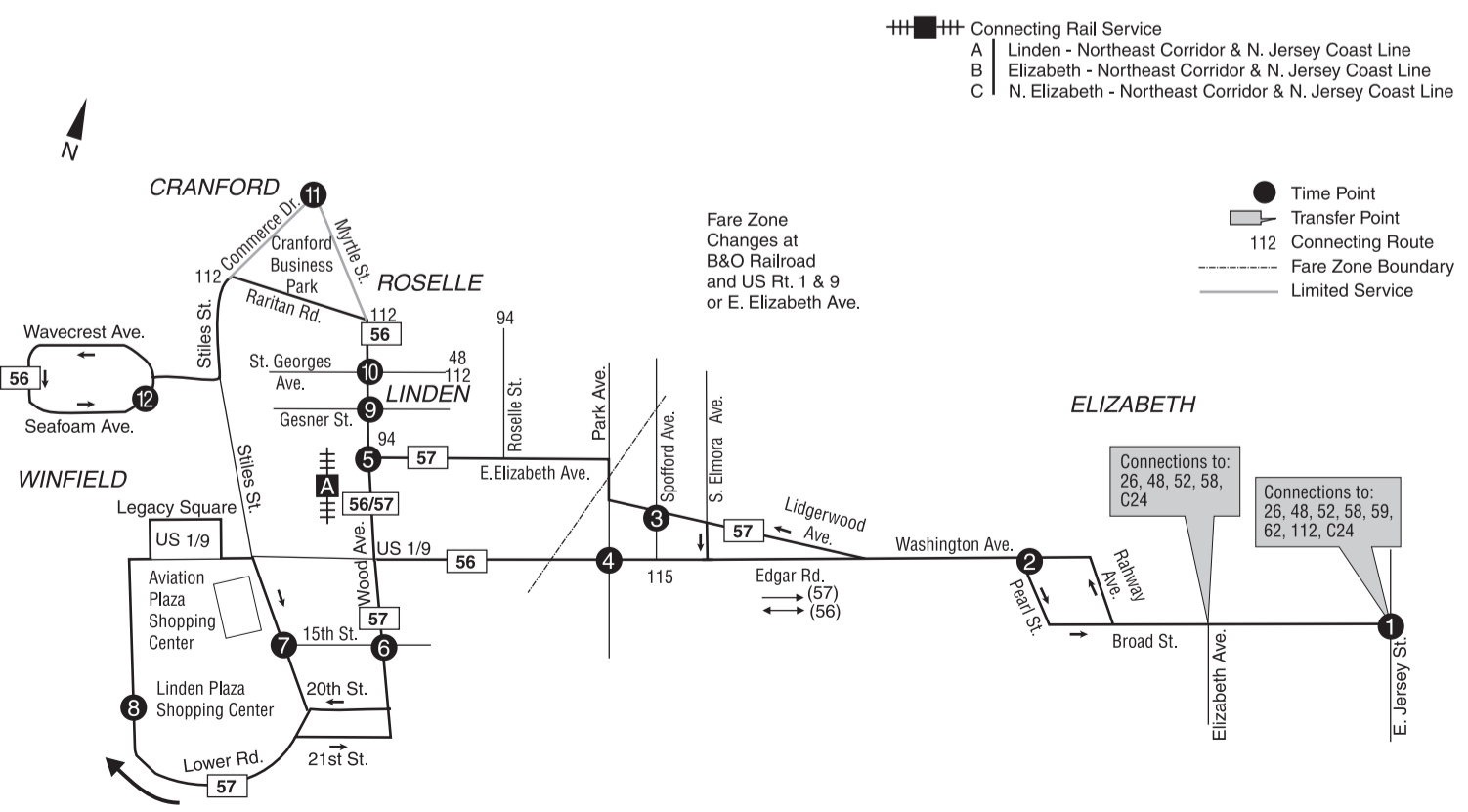
- Bus Operators
- Bus Servicepersons
- Other Positions

njtransit.com/careers

FARE-PAY
 Tap your card to pay your fare.

NJTRANSIT.COM/FAREPAY

LOAD. RIDE. REPEAT.



56/57 ELIZABETH - LINDEN - WINFIELD



Important Changes what's new for riders

The weekday and Saturday schedules have been updated with revised running time to improve efficiency and on-time performance. Please see schedules for details as trip times in both directions may have changed.

Purchase tickets or a monthly pass for this route using the NJ TRANSIT Mobile App®. Download or update the free app for the latest features.

Contact Us we're here to help



Customer Service
 Commendations/Complaints
 Schedules, Fares and Lost & Found
 NJ TRANSIT Information
1 (973) 275-5555
 Text Telephone (TTY) (800) 772-2287

Language Assistance

Translation services are available using Google Translate on njtransit.com, by calling 973-275-5555, or stopping at a Customer Service Office.



To Elizabeth

Weekdays

LINE NO.	MAP REFERENCE										
	12	11	10	8	7	6	5	4	3	2	1
WINFIELD Wavcrest Ave. at Seafoam Ave.											
CRANFORD Commerce Dr. at Myrtle St.											
LINDEN Wood Ave. at St. Georges Ave.											
LINDEN Linden Plaza (at Supermarket)											
LINDEN Stiles St. at Aviation Plaza - 2nd entr.											
LINDEN Wood Ave. at 15th St.											
LINDEN Wood Ave. at Railroad Station											
LINDEN US 1 & 9 at Park Ave.											
LINDEN Lidgerwood Ave. at Spofford Ave.											
ELIZABETH Washington Ave. at Pearl St.											
ELIZABETH Broad St. at Jersey St.											
56	525	-	531	-	-	-	535	541	-	547	550
57	-	-	-	547	555	558	603	-	610	615	620
56	655	-	702	-	-	-	707	713	-	720	724
57	-	-	-	715	722	725	731	-	738	743	748
56	825	-	832	-	-	-	837	843	-	850	854
57	-	-	-	840	847	-	856	-	903	908	913
56	950	-	957	-	-	-	1003	1010	-	1016	1021
57	-	-	-	1005	1013	1016	1022	-	1030	1035	1040
56	1120	-	1127	-	-	-	1133	1140	-	1146	1151
57	-	-	-	1144	1152	1155	1201	-	1209	1214	1219
56	1250	-	1257	-	-	-	103	110	-	116	121
57	-	-	-	1255	103	106	112	-	120	125	130
56	220	-	227	-	-	-	233	240	-	246	251
57	-	-	-	220	228	231	237	-	245	250	255
57	-	-	-	348	356	359	406	-	416	422	427
56	355	-	403	-	-	-	410	418	-	425	431
57	-	-	-	513	521	524	531	-	541	547	552
56 C	535	541	547	-	-	-	554	602	-	608	612
57	-	-	-	632	639	642	647	-	654	700	704
56 C	710	714	719	-	-	-	724	730	-	736	740
57	-	-	-	757	804	807	812	-	819	825	829
56 C	840	844	849	-	-	-	854	900	-	906	910
57	-	-	-	922	929	932	937	-	944	950	954
57	-	-	-	1044	1051	1054	1058	-	1105	1109	1112

C - Trip operates via Cranford Business Park.

NOTE: - Passengers from Tremley/Lower Rd. area traveling to Linden/Elizabeth should board a No. 57 bus to Linden Plaza and remain on the bus.

Saturdays

LINE NO.	MAP REFERENCE										
	12	10	8	7	6	5	4	3	2	1	
WINFIELD Wavcrest Ave. at Seafoam Ave.											
LINDEN Wood Ave. at St. Georges Ave.											
LINDEN Linden Plaza (at Supermarket)											
LINDEN Stiles St. at Aviation Plaza - 2nd entr.											
LINDEN Wood Ave. at 15th St.											
LINDEN Wood Ave. at Railroad Station											
LINDEN US 1 & 9 at Park Ave.											
LINDEN Lidgerwood Ave. at Spofford Ave.											
ELIZABETH Washington Ave. at Pearl St.											
ELIZABETH Broad St. at Jersey St.											
56	615	621	-	-	-	626	632	-	638	641	641
57	-	-	640	647	650	654	-	700	704	707	707
56	735	741	-	-	-	746	752	-	758	801	801
57	-	-	745	752	755	759	-	805	809	812	812
57	-	-	850	857	900	905	-	912	917	921	921
56	855	901	-	-	-	907	914	-	920	925	925
57	-	-	1003	1011	1014	1019	-	1026	1031	1035	1035
56	1020	1027	-	-	-	1033	1040	-	1046	1051	1051
57	-	-	1113	1121	1124	1129	-	1136	1141	1145	1145
56	1145	1152	-	-	-	1158	1205	-	1211	1216	1216
57	-	-	1223	1231	1234	1239	-	1246	1251	1255	1255
56	1255	102	-	-	-	108	115	-	121	126	126
57	-	-	133	141	144	149	-	156	201	205	205
56	220	227	-	-	-	233	240	-	246	251	251
57	-	-	223	231	234	239	-	246	251	255	255
57	-	-	338	346	348	353	-	400	406	410	410
56	345	352	-	-	-	357	404	-	410	414	414
57	-	-	453	501	503	508	-	515	521	525	525
56	505	512	-	-	-	517	524	-	530	534	534
57	-	-	608	615	618	622	-	629	634	638	638
56	625	631	-	-	-	636	643	-	649	653	653
57	-	-	719	726	729	733	-	740	745	749	749
57	-	-	834	841	844	848	-	855	900	904	904
57	-	-	949	956	959	1003	-	1009	1014	1017	1017
57	-	-	1054	1100	1102	1106	-	1112	1117	1120	1120

A.M. - Light face type
 P.M. - Bold face type

NO SERVICE will be operated on Sundays.



NJ TRANSIT Mobile App®

- Schedules
- Tickets
- Alerts
- Rider Tools
- NJT Rewards




njtransit.com/app




Language Services



Available

973-275-5555

Three ways to get real-time bus arrival info.



- Tap MyBus in the NJ TRANSIT Mobile App®
- Visit njtransit.com/mybus
- Text the 5-digit Bus Stop ID to MYBUS (69287)

njtransit.com/mybus

Holiday Service Guide

For more information and access to all schedules for the following holidays, please visit our website at www.njtransit.com.

New Year's Day - Jan. 1	Labor Day
Day After New Year's Day - Jan. 2	Columbus Day
Martin Luther King Jr. Day	Veterans Day
President's Day	Wednesday Before Thanksgiving
Good Friday	Thanksgiving Day
Friday Before Memorial Day	Friday After Thanksgiving
Memorial Day	Friday Before Christmas
Juneteenth	Christmas Eve - Dec. 24
Friday Before Independence Day	Christmas Day - Dec. 25
Day Before Independence Day - July 3	Day After Christmas - Dec. 26
Independence Day - July 4	Friday Before New Year's
Day After Independence Day - July 5	New Year's Eve - Dec. 31
Friday Before Labor Day	

Fare Information

This is an exact fare line. Passengers are required to have exact fare when boarding buses on this line. One dollar bills and most U.S. coins are accepted. Drivers do not carry money and cannot make change. Customers departing from the Port Authority Bus Terminal or George Washington Bridge Bus Station in New York MUST have a ticket or pass to board a bus.

How to determine your fare

Your fare is based on the number of zones you are traveling through. Check the map or fare chart on this schedule to see how many zones you travel. Each time you cross a zone boundary, you must pay for another zone.

Cash Fares

Zone	1	2	Transfer
Adult	\$1.85	\$2.95	\$0.85
Children (5-11) & Sr. Citizens (62 & Older)	\$0.85	\$1.25	\$0.40

Transfers must be purchased when boarding bus.

For additional information about NJ TRANSIT bus fare and ticket options, please visit njtransit.com/fares.