

### Welcome

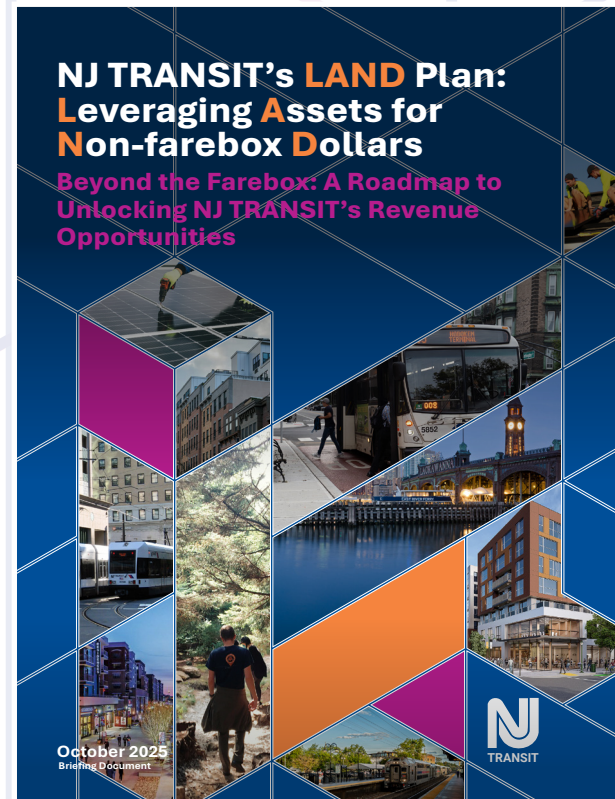


#### Letter from NJ TRANSIT President & CEO Kris Kolluri


Thank you for joining us at NJ TRANSIT's first-ever LAND Plan Industry Day. Today's open house is designed to give you the opportunity to meet my NJ TRANSIT colleagues directly involved in implementing LAND Plan initiatives, explore upcoming development and leasing opportunities, and connect with your industry peers.

The LAND Plan presents a unique opportunity to build on our project successes to date and deliver real benefits for NJ TRANSIT, the state, and local municipalities through the activation of NJ TRANSIT's real estate assets. We know that successful implementation requires early and sustained collaboration with private industry, our state partners, and the communities we serve. To that end, we are here to share development and leasing opportunities across our system and connect you directly with key state and local partners, subject matter experts, and professionals who will be critical to advancing this work.


Thank you again for your time today and for your interest in NJ TRANSIT's LAND Plan initiatives. We value your partnership and look forward to working together to deliver projects that will benefit our communities and the state for years to come.





### Key Benefits of the LAND Plan

 **\$1.2-1.9B** incremental revenue to NJ TRANSIT

 **\$10-14B** in economic impact to New Jersey

 **\$1.1-1.6B** increase in municipal revenues

 **14-20K** new housing units, including 2.6-4K affordable units

 **30-50K** New Jersey jobs created

 Solar Power & Wetland Restoration



South Orange



Somerville

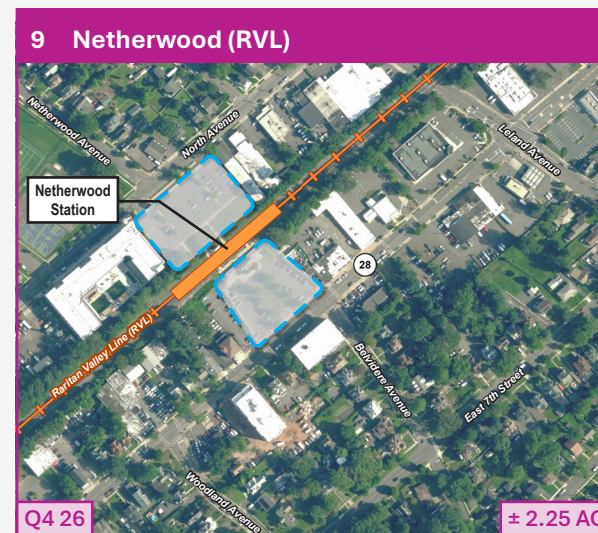
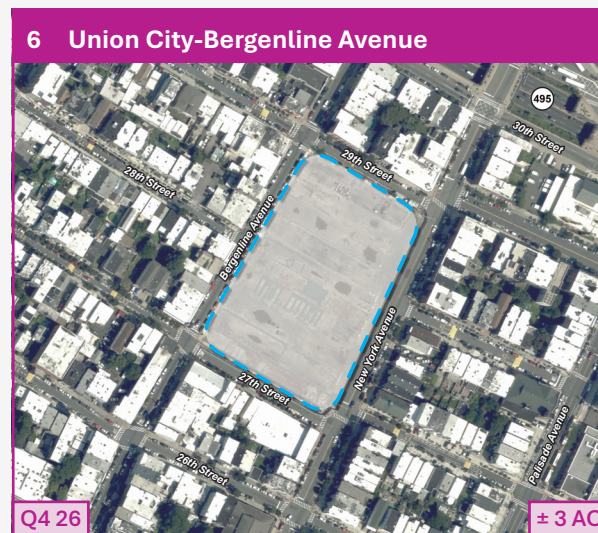
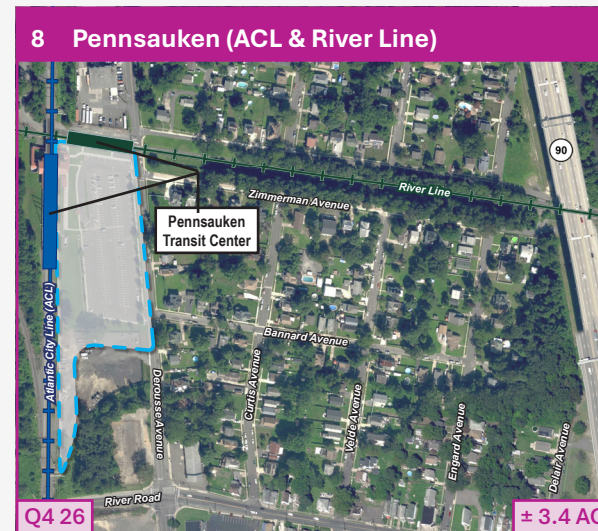
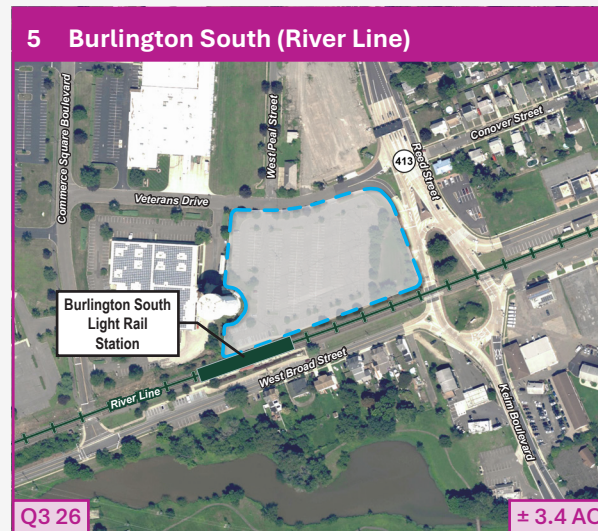
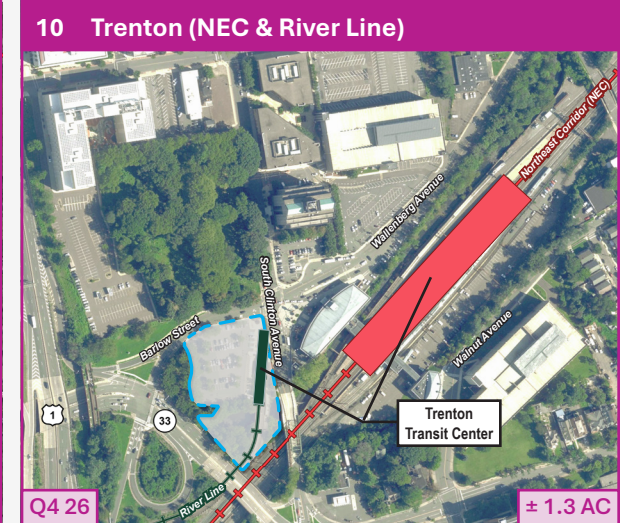
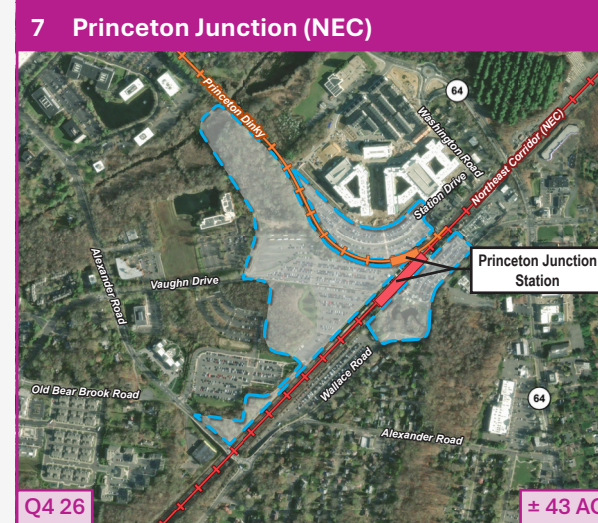
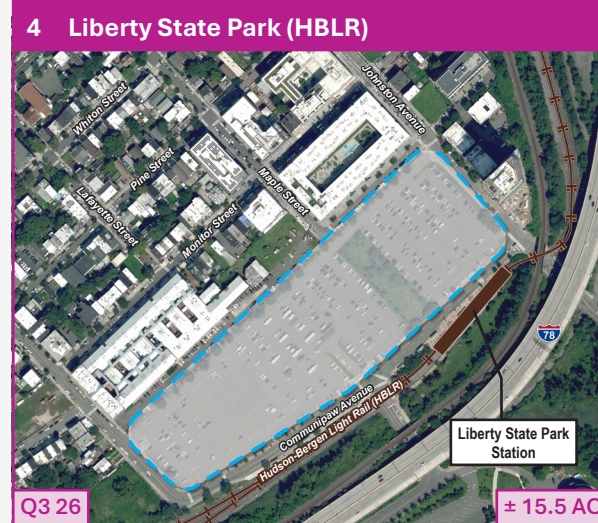
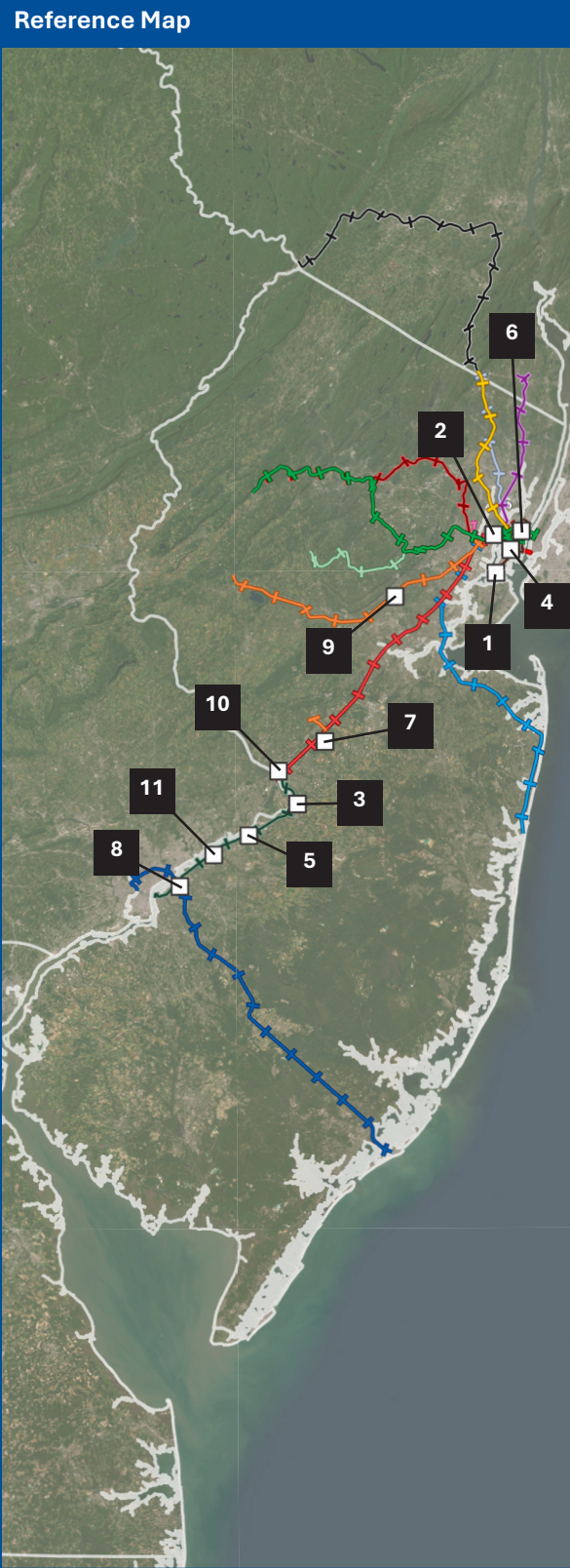


Orange



Metropark

### Opportunities



Scan the QR Code for the NJ TRANSIT LAND Plan & More Information